

Swimway stakeholder
bijeenkomst
18 feb 2021

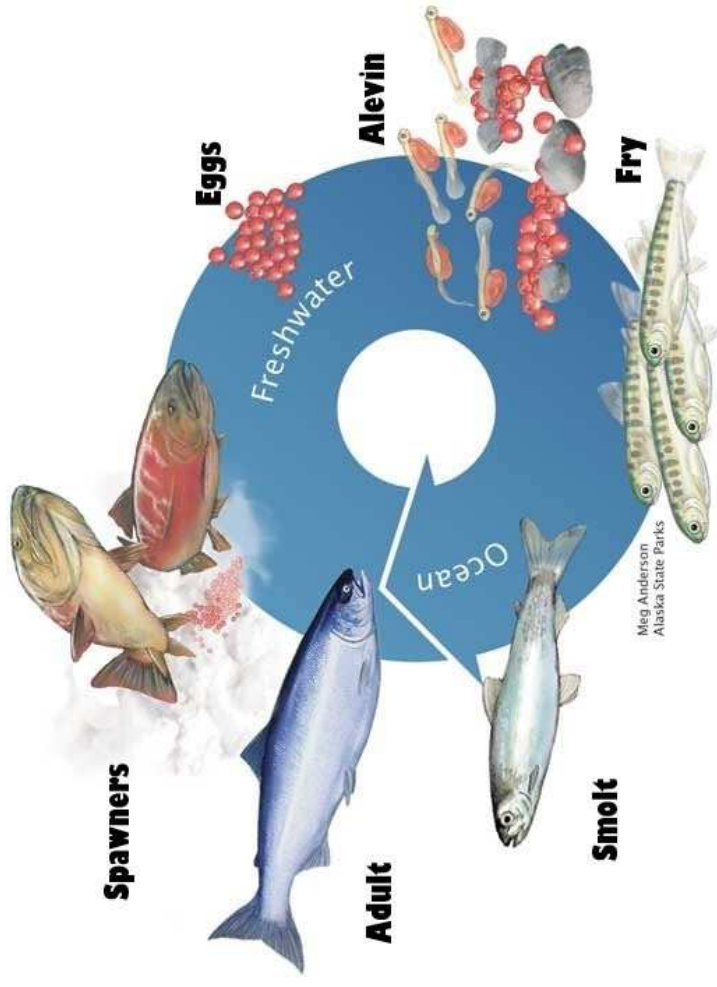
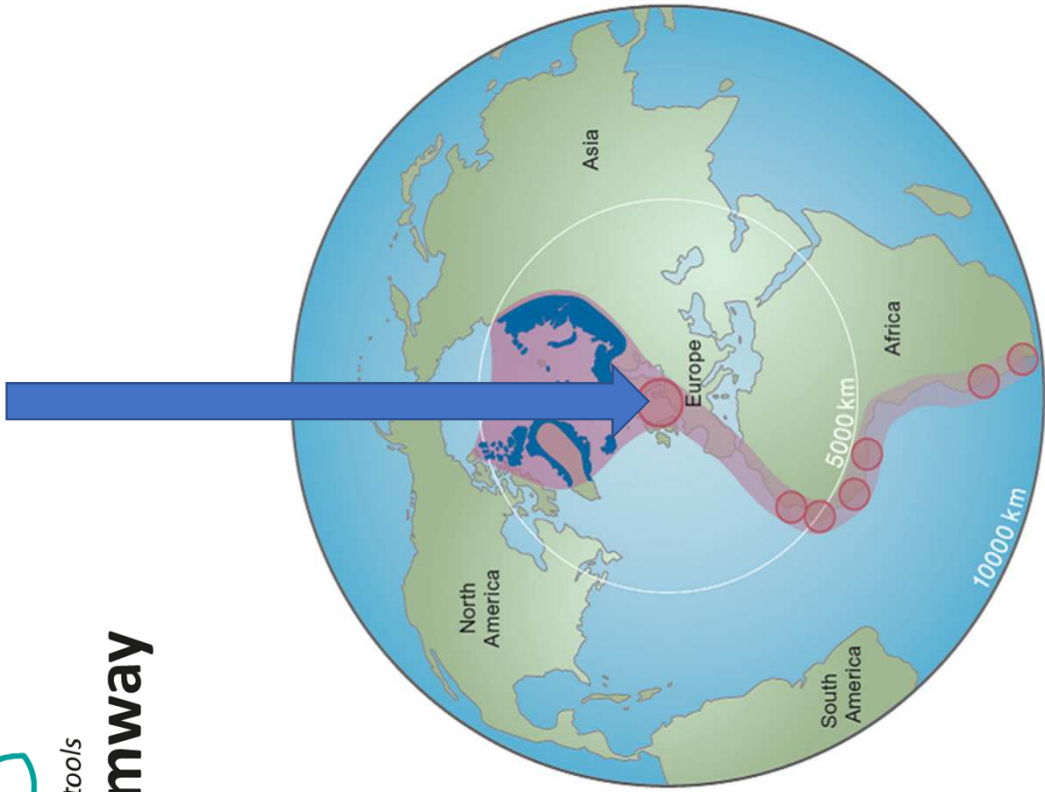


Waddentools

Swimway

www.swimway.nl

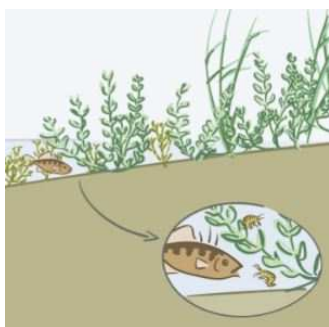






**Hoe gebruikt vis de Waddenzee, en hoe
scherpen we ons beheer en beleid hiermee aan?**

5 deelprojecten



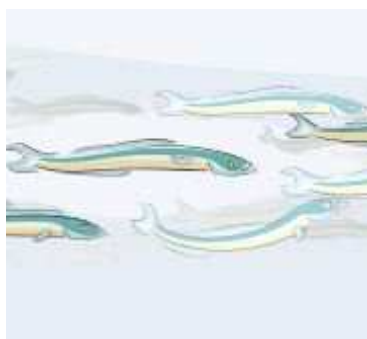
Kwelders

Hannah
Charan-Dixon
RuG



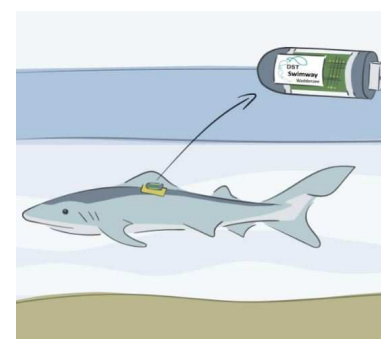
Schelpdierriffen

Maryann
Watson
RuG



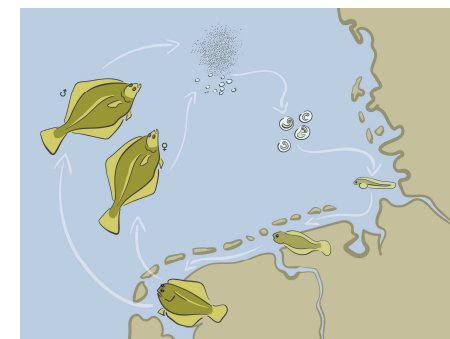
Pelagische vis

Margot
Maathuis
WMR



Telemetrie

Jena
Edwards
WMR-NIOZ

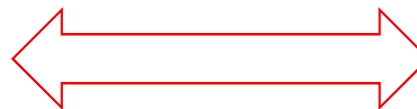
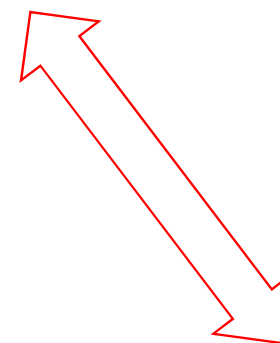
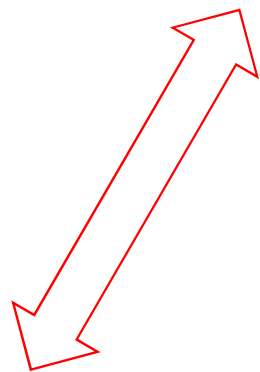


Levenscyclus model

Bass
Dye
NIOZ



rijksuniversiteit
groningen

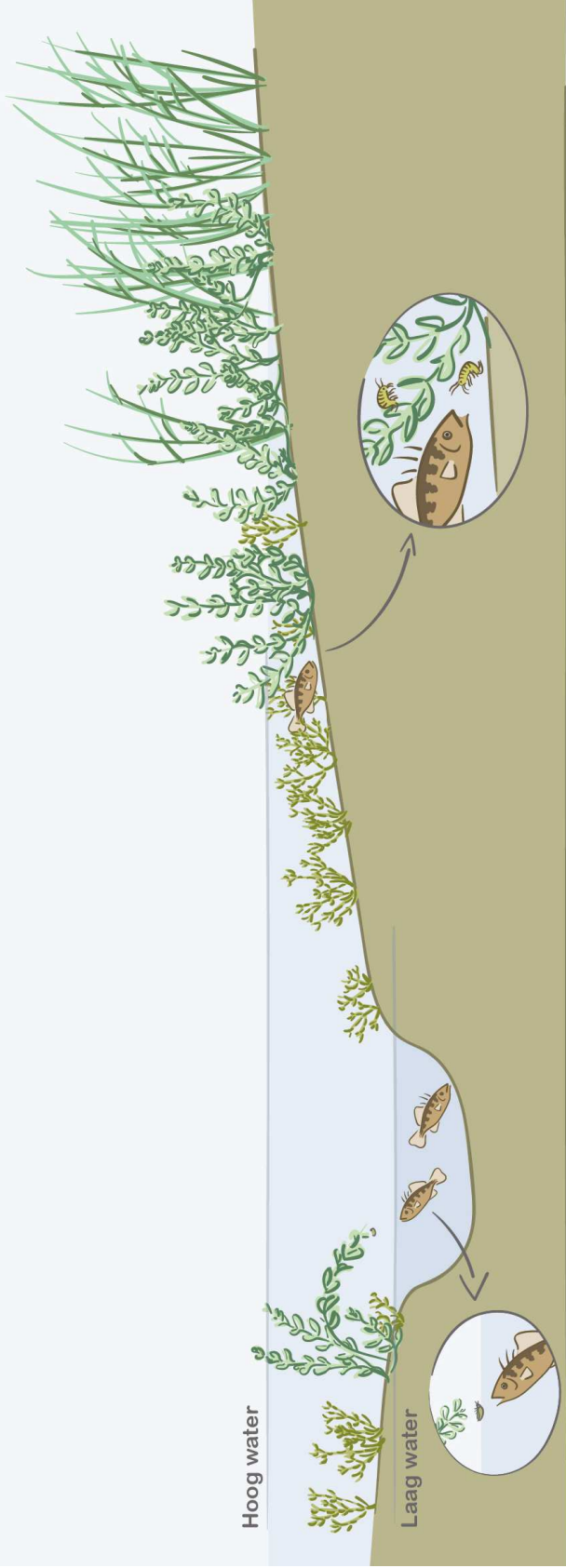
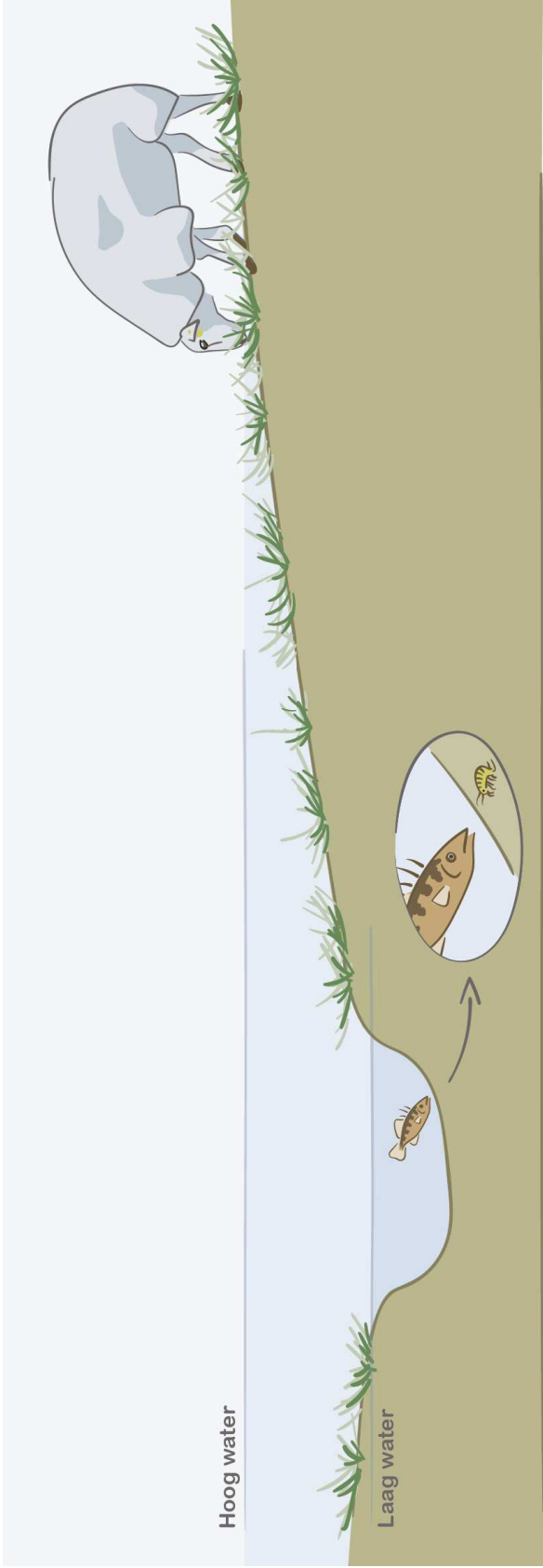


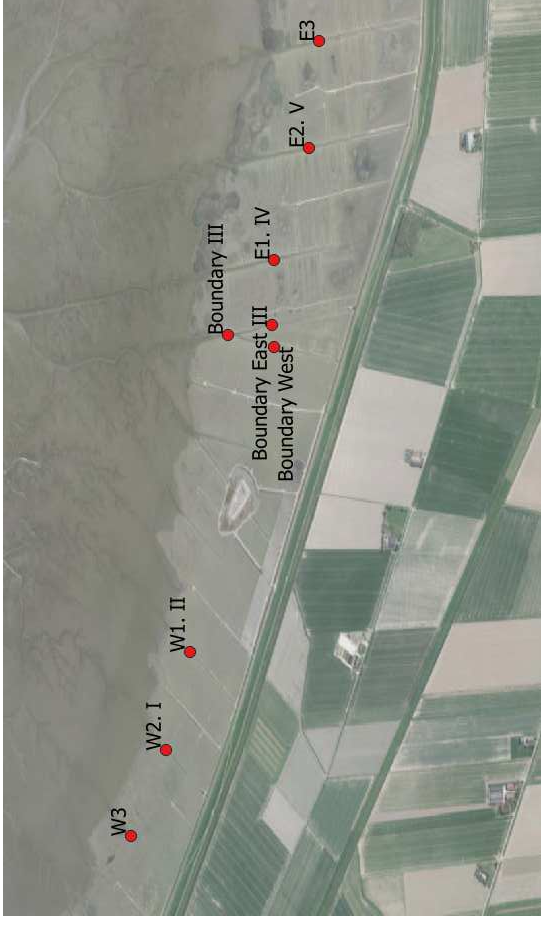
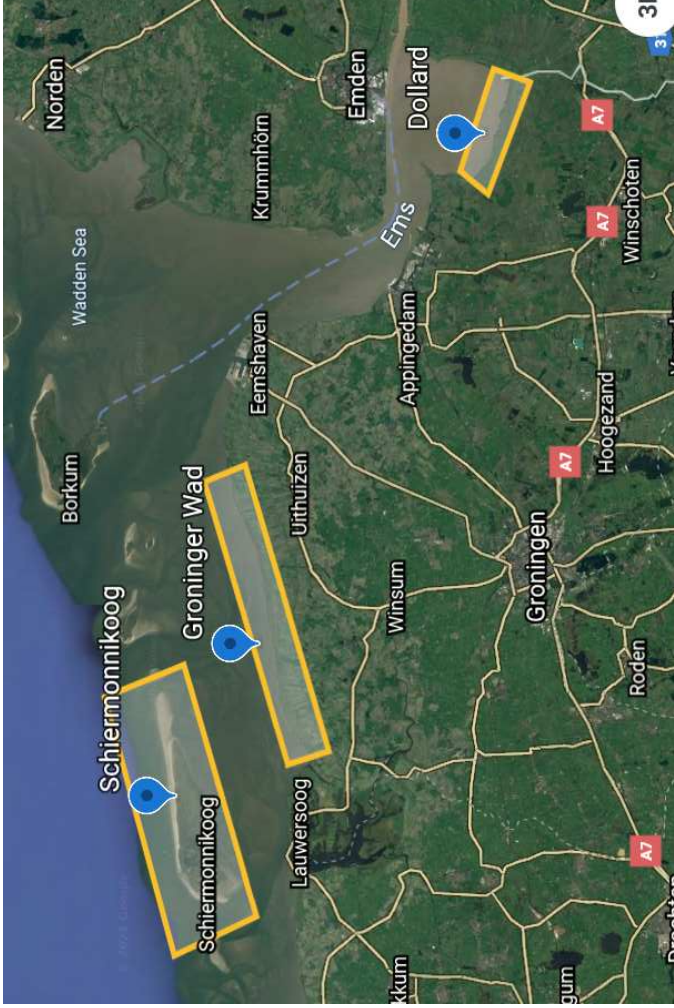


DP1

Vis in de kwelder

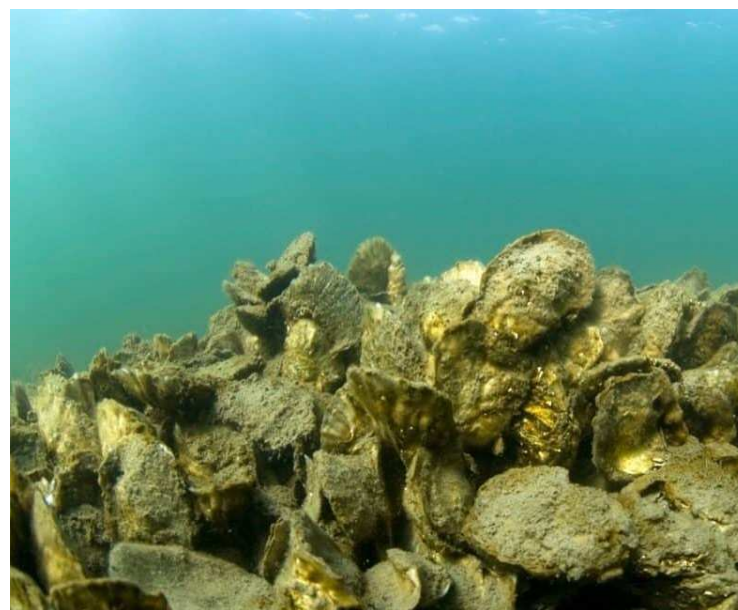


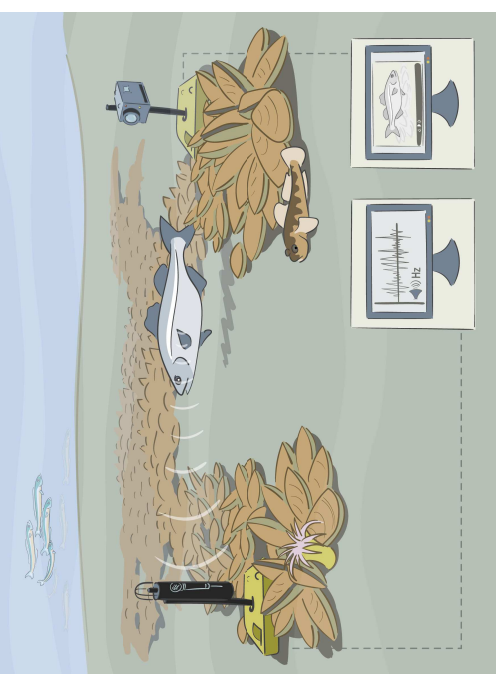




DP2

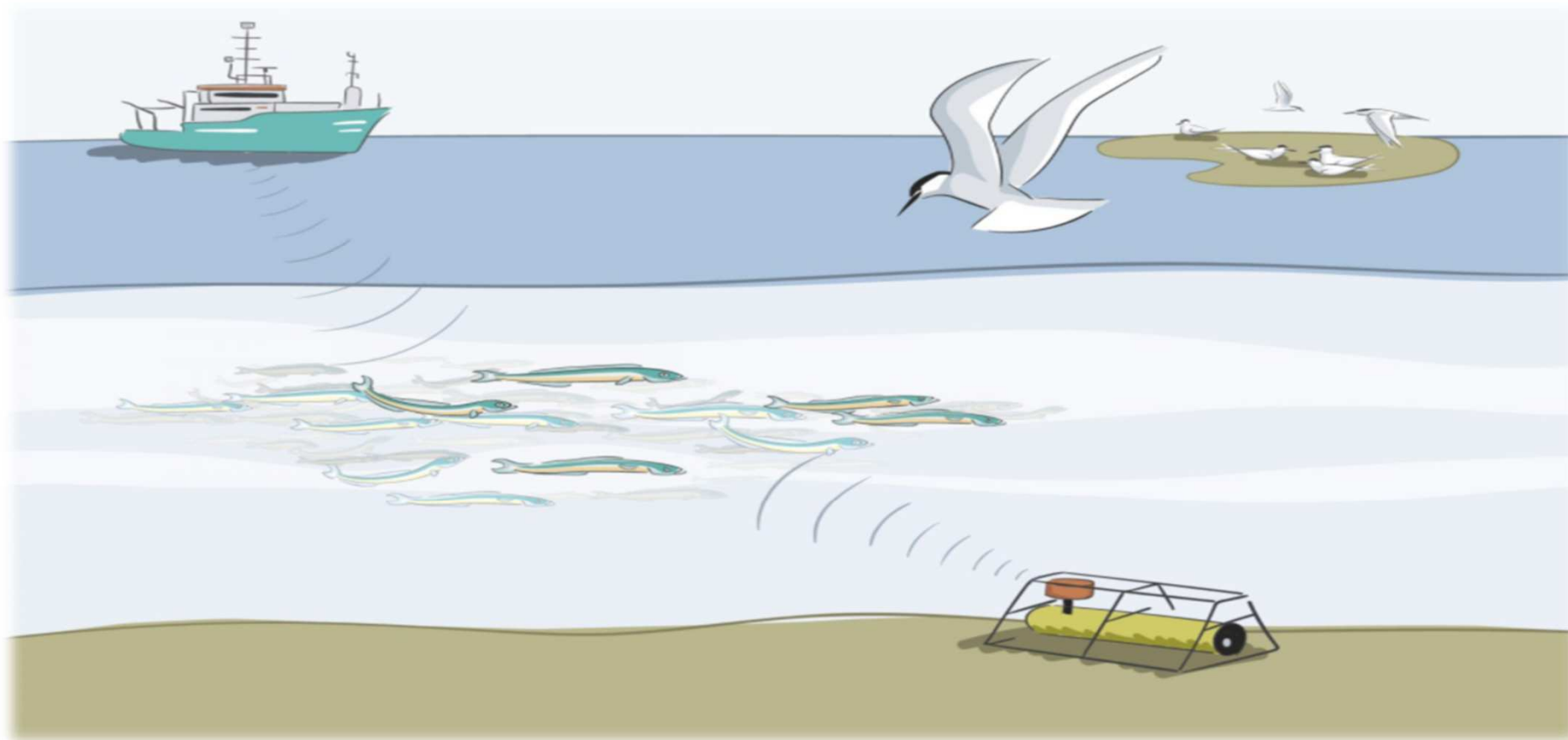
Vis en schelpdierriffen

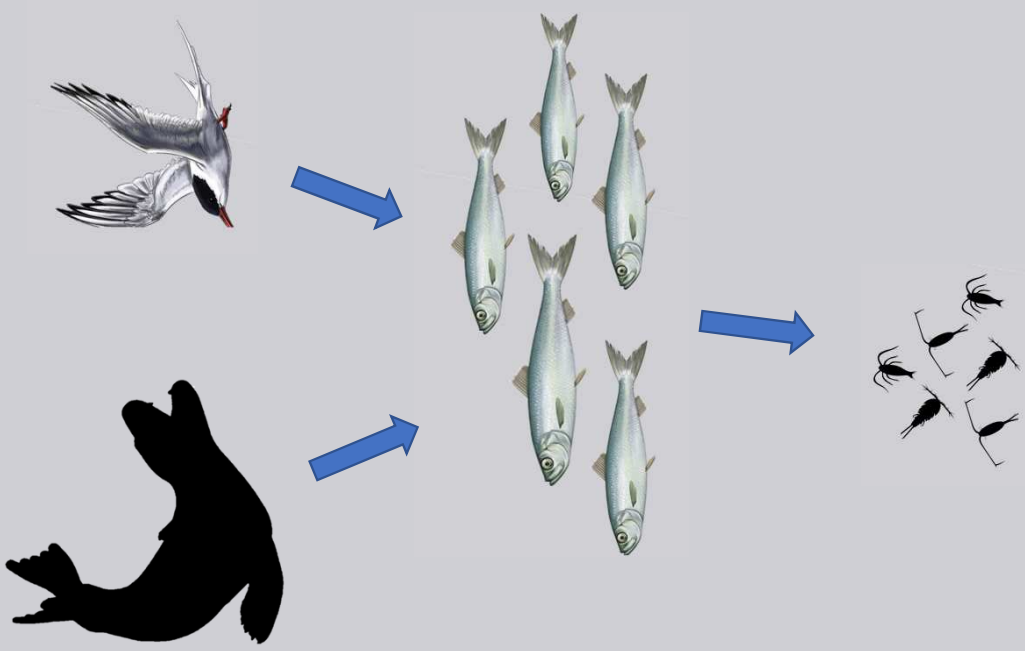
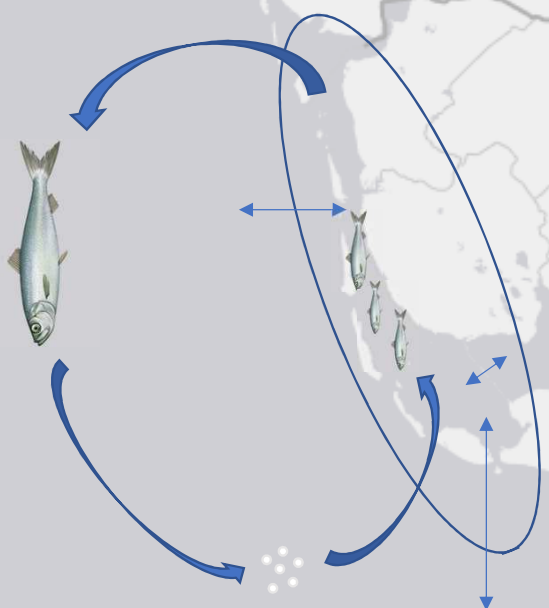




DP3

Pelagische vis

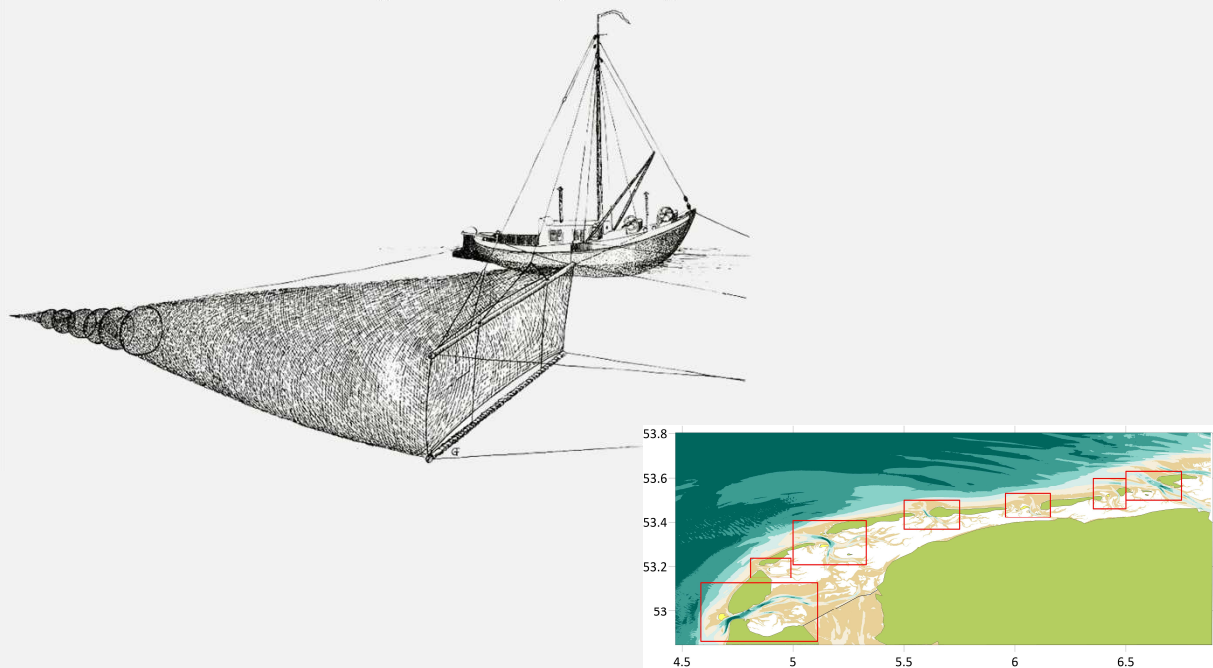




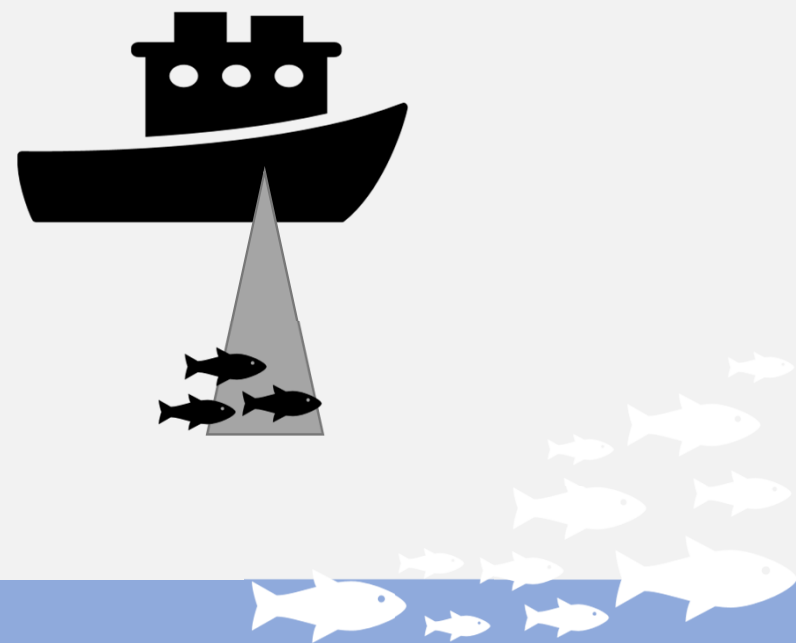
BELGIË

Spatio-temporele verspreiding

Ankerkuil jaarrond (2021)



Akoestische survey in het voor en najaar

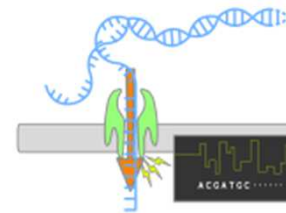
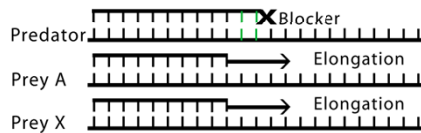


Collect sample
& preprocessing



DNA extraction

A standardized region
is amplified,
except host

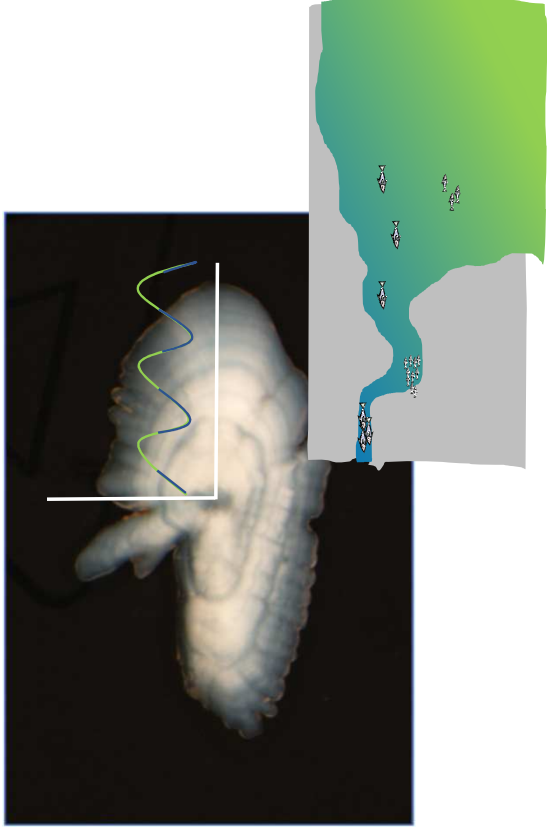


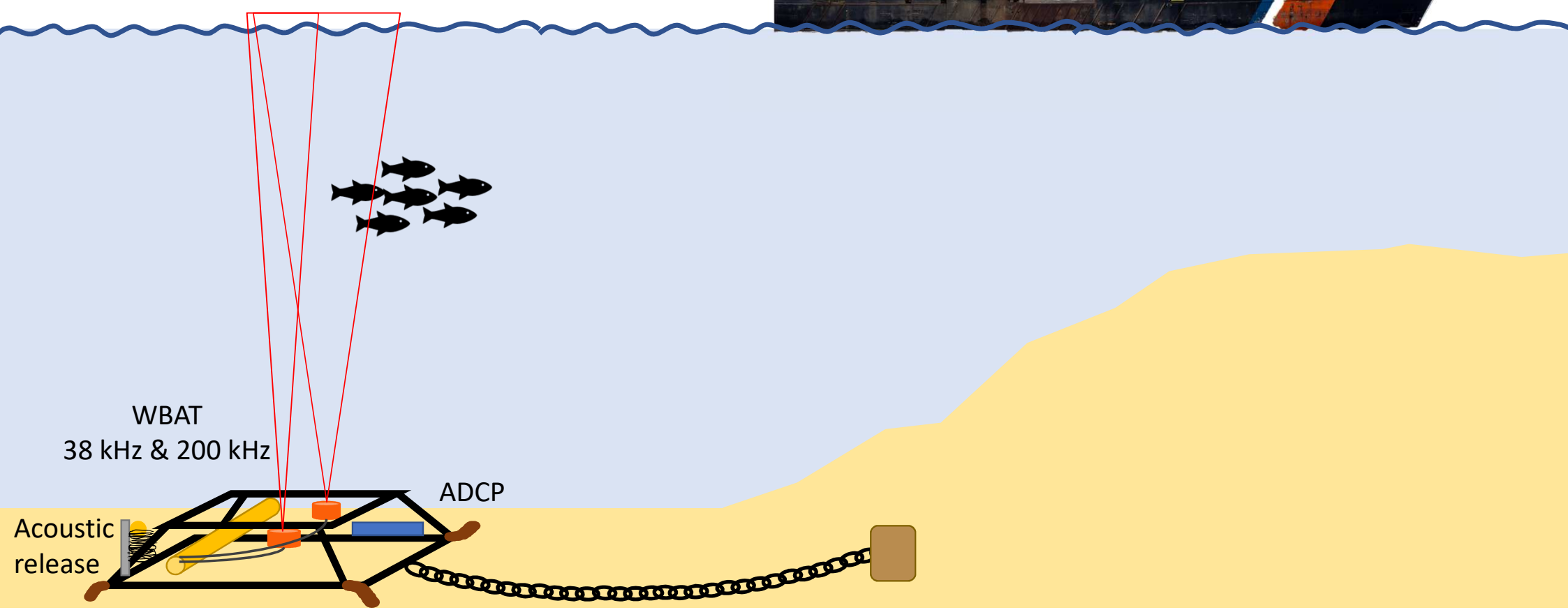
Amplicons are
sequenced
(Oxford Nanopore)

Compared to
reference database
for species ID

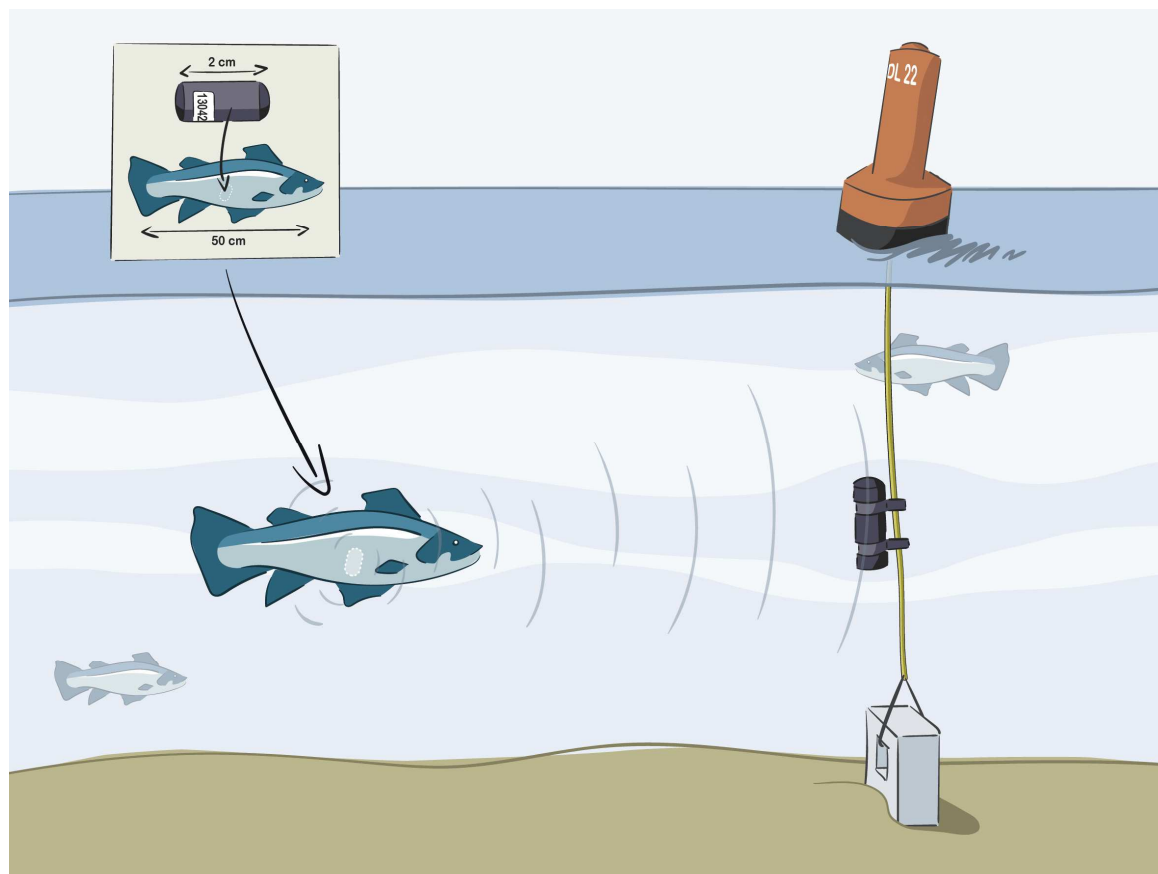
```

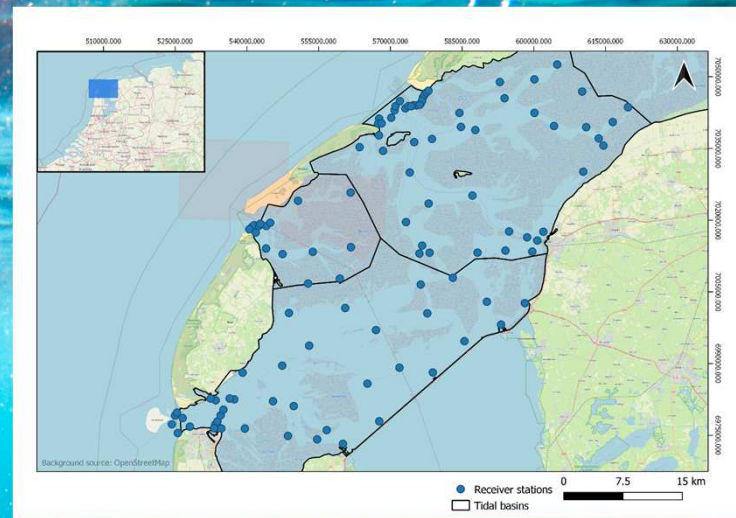
tttgagtatacaact
ttcgagcatagcact
aacgtccaaggagt
ttggagcatagcact
aagggtccaagagt
ttcgagcatagcact
atcgccaatggagt
aagggtccaacgagt
aacgtccaaggagt
tttgagtatacaact
  
```





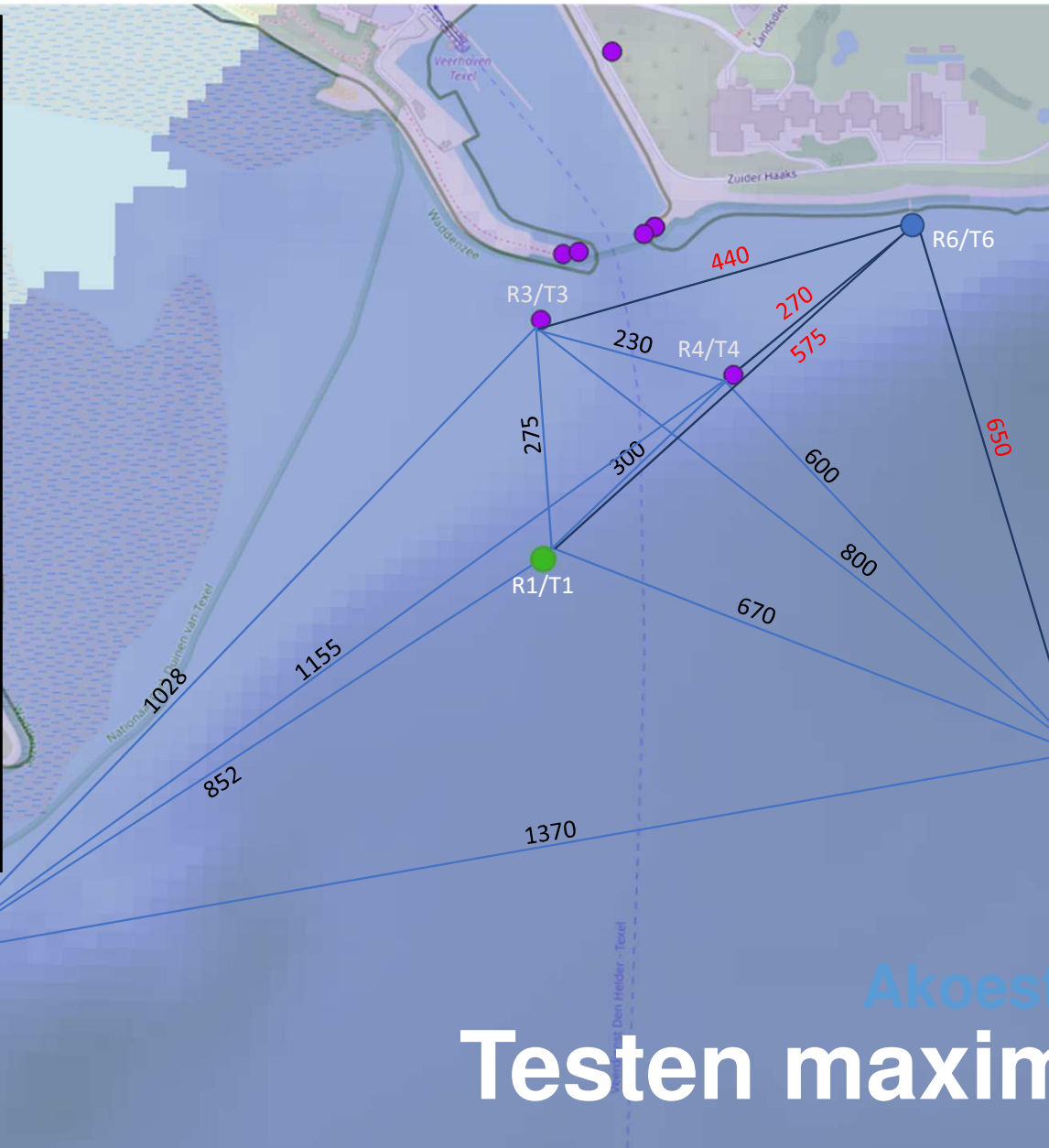
DP4 telemetrie (grote vis)



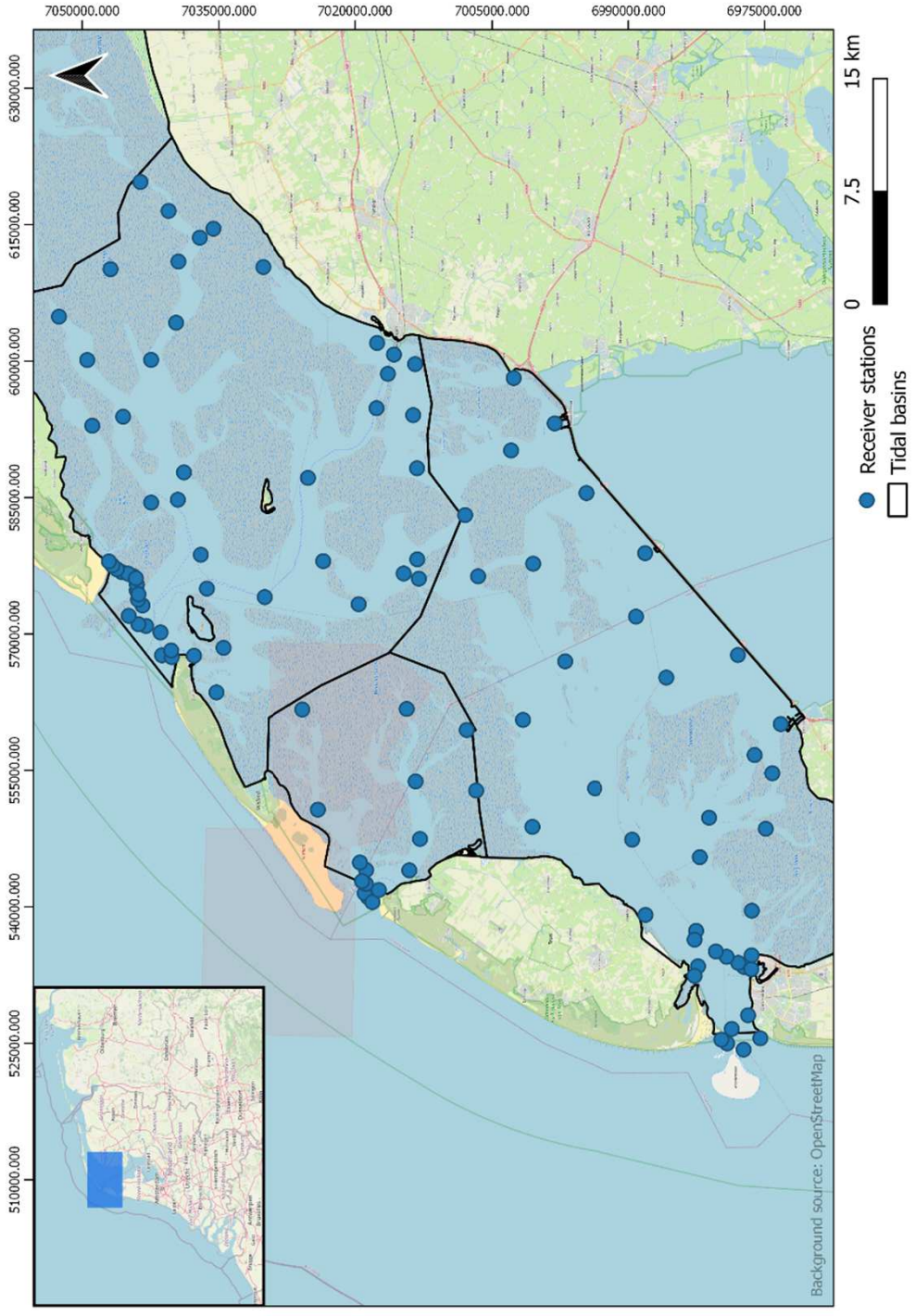


Western Dutch Wadden Sea Acoustic telemetry





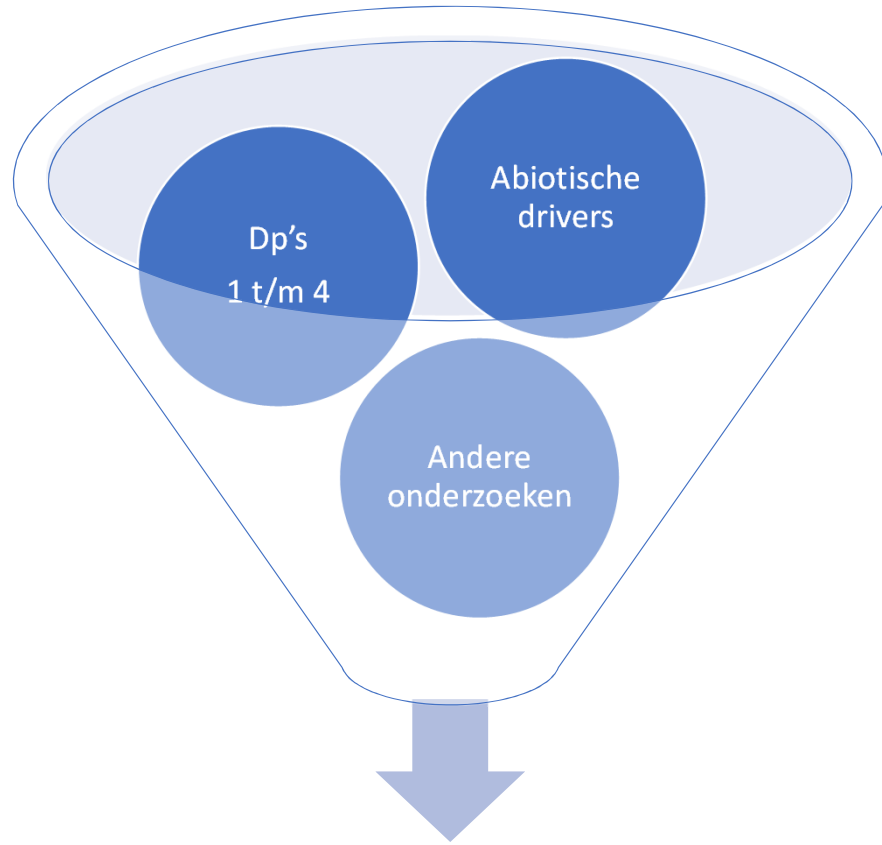
Akoestische telemetrie
Testen maximaal bereik



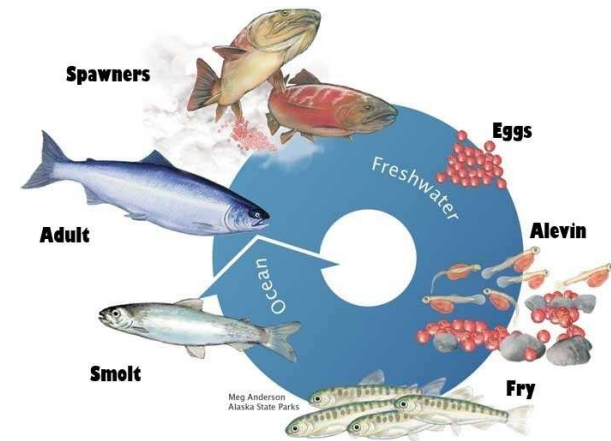
DP5

Levenscyclus model

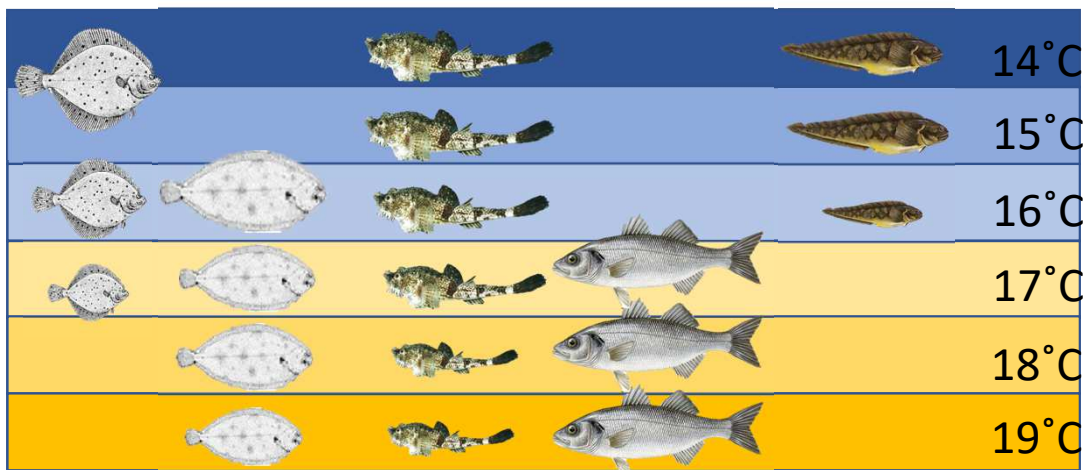




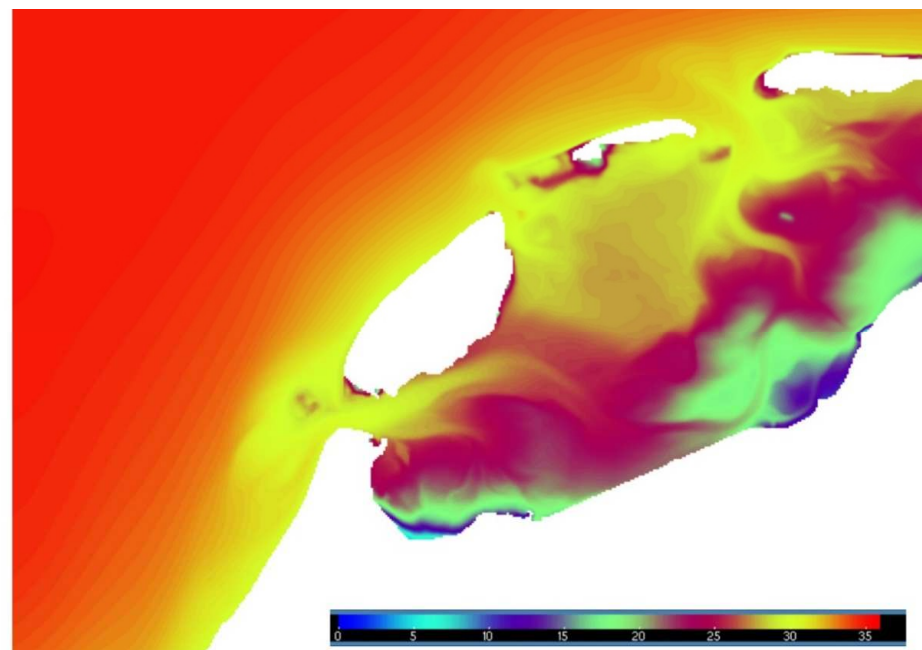
Voorspellend model



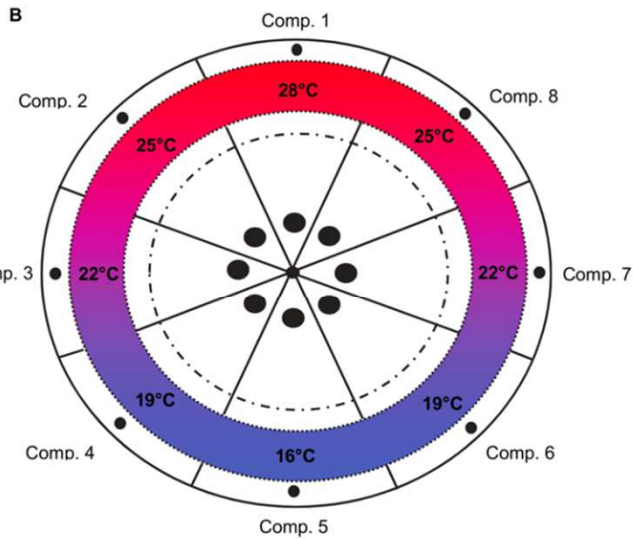
Identificeren van de 'drivers'



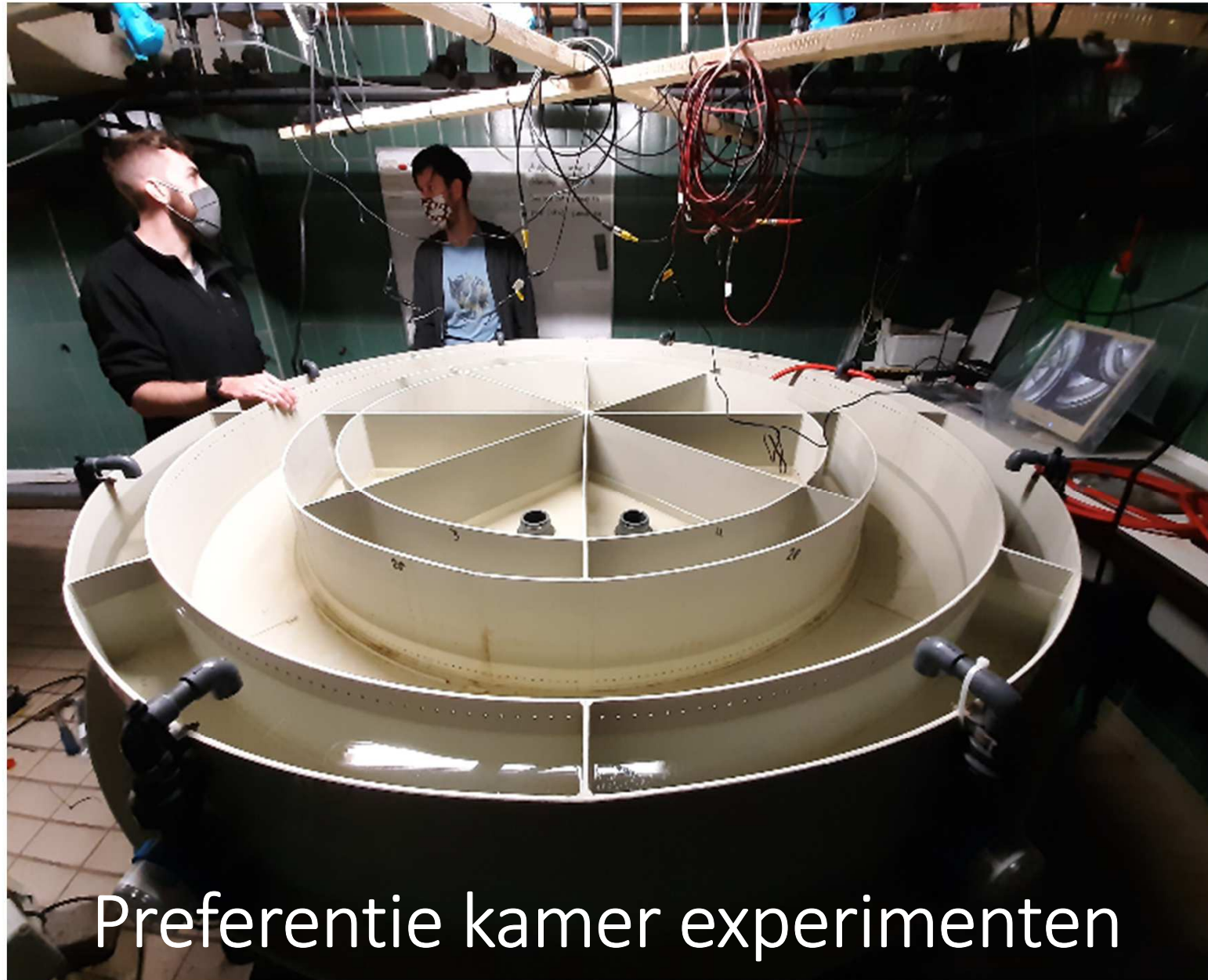
Bottom salt
April 2010



Temperatuur gradiënt



Schram et al. 2013



Preferentie kamer experimenten



Abonneer je op de nieuwsbrief !
via [www. swimway.nl/nieuws](http://www.swimway.nl/nieuws)

Wouter van der Heij

vanderheij@waddenvereniging.nl

@waddenwouter