

Water as Leverage Wadden

Een innovatieve aanpak om klimaatadaptatie te versnellen

Een samenwerking van:

Water as Leverage

Programma naar een Rijke Waddenzee

Regional organizations from NL, GER, DE

Klimaatadaptatie week

Regionaal: Lauwersmeer

Nationaal: Eems Dollard

Internationaal: klimaatadaptatie

Sterker op agenda Wadden Sea



2:43 / 3:48

Water for as Resilient Cities Leverage Asia

Water as Leverage - Asia

2020 Best Commissioning Winner

Voorstel PBL & DP

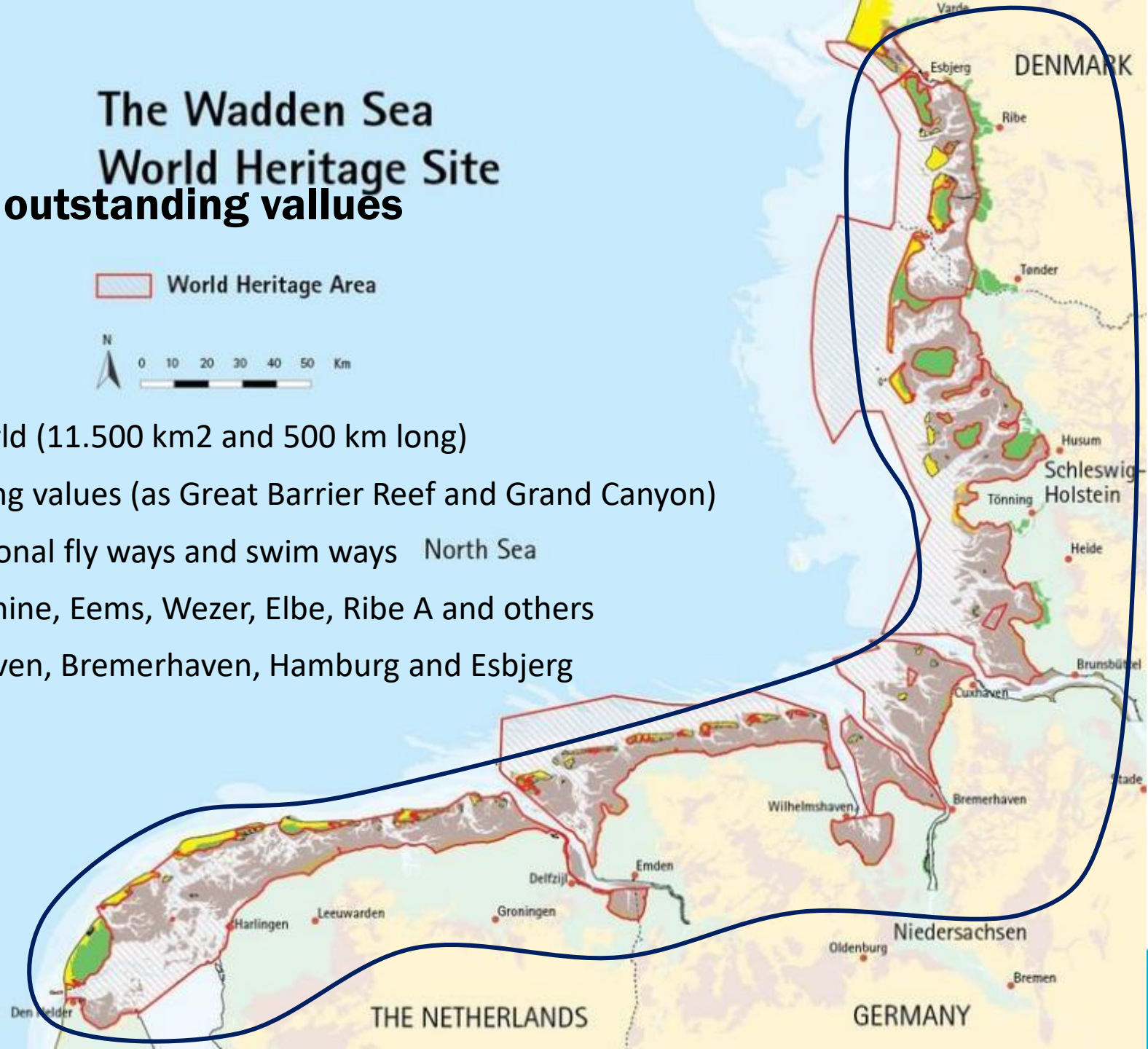


Wadden Sea Region: unique outstanding values

- Largest tidal flat ecosystem in the world (11.500 km² and 500 km long)
- UNESCO world heritage for outstanding values (as Great Barrier Reef and Grand Canyon)
- Natural area with key role in international fly ways and swim ways
- Connected to large and small rivers Rhine, Eems, Wezer, Elbe, Ribe A and others
- Many harbors as Den Helder, Eemshaven, Bremerhaven, Hamburg and Esbjerg
- Old cities and fisheries communities
- High quality agricultural land

The Wadden Sea World Heritage Site

World Heritage Area



Waarom HIER en NU mee aan de slag?

1. UNESCO werelderfgoed

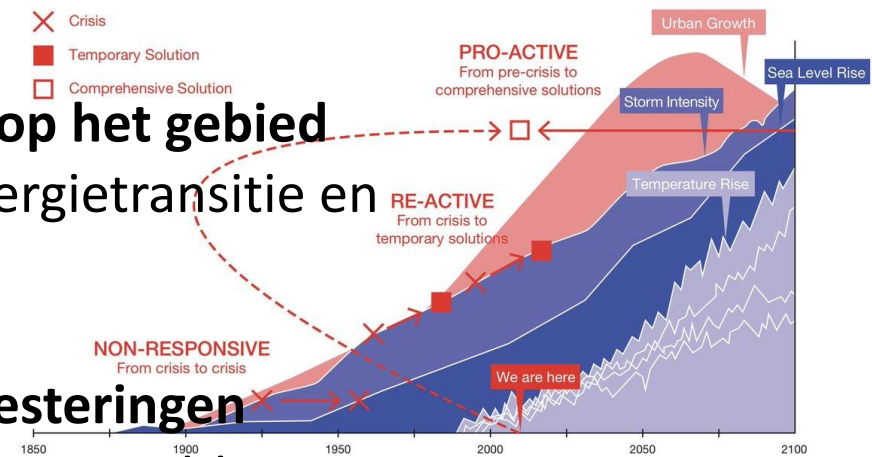
Gebied met unieke waarde voor natuur en mens, op regionaal, nationaal en internationaal niveau

2. Er zijn véél urgente issues met een verwachte grote impact op het gebied

Afname biodiversiteit, klimaatverandering, voedseltransitie, energietransitie en afname leefbaarheid/krimp gebied

3. Een sectorale aanpak gaat niet lukken; integrale aanpak investeringen

Dijkversterking, natuurherstel, regionaal watersysteem, landbouwtransitie, versterking regionale economie lukt sectoraal niet en kan niet op draagvlak rekenen; inspiratie in aanpak en voorbeeldprojecten (Yes We Can) is nodig



Wat biedt een Water as Leverage Wadden aanpak?



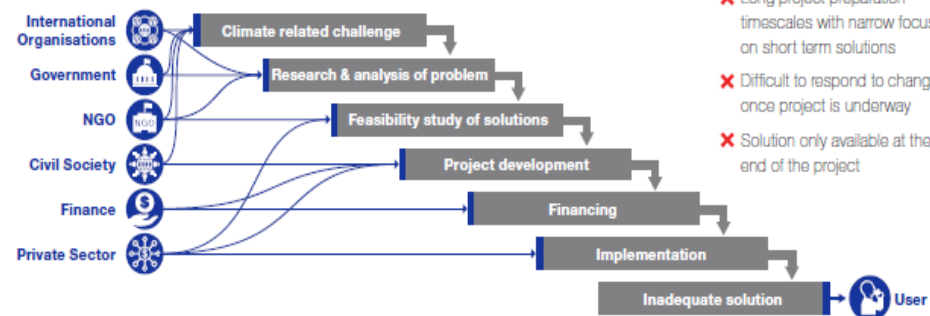
- 1. Inzet hoogwaardige kennis en internationale perspectief**
- 2. Een *soft spaces*, integrale aanpak vanuit het maatschappelijke middenveld**
- 3. Snelkookpan-methode gericht op innovatieve, integrale en financierbare voorstellen**

Water as Leverage Rethinking the approach for climate resilience

The World Economic Forum ranked water crises number one in its 2015 assessment of global risks. Traditional project management cannot keep pace with the impact of climate change on global water supplies. A new approach is needed.

THE TRADITIONAL APPROACH

STAKEHOLDER

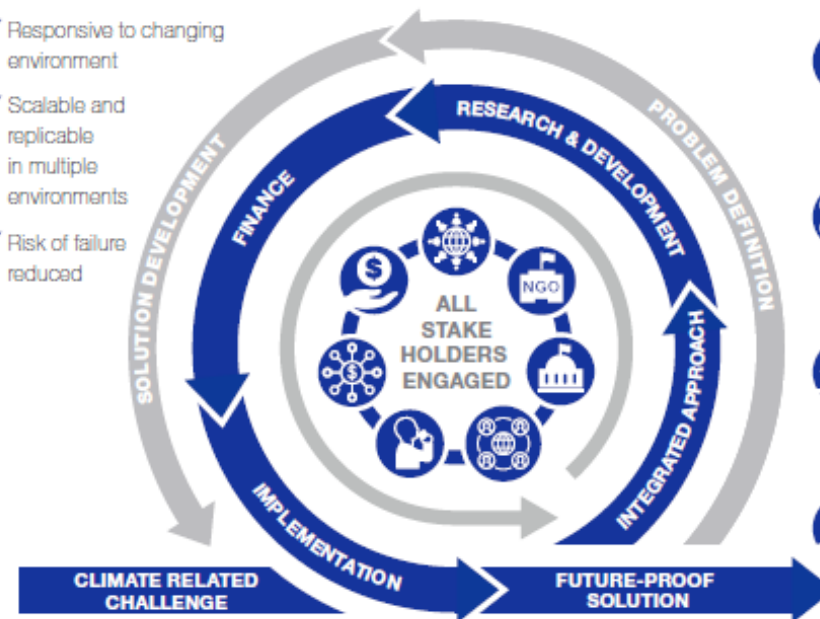


- ✗ Multiple stakeholders involved at different times
- ✗ Long project preparation timescales with narrow focus on short term solutions
- ✗ Difficult to respond to change once project is underway
- ✗ Solution only available at the end of the project

WATER AS LEVERAGE

THE WATER AS LEVERAGE APPROACH

- ✓ All stakeholders involved from day one
- ✓ Responsive to changing environment
- ✓ Scalable and replicable in multiple environments
- ✓ Risk of failure reduced



- People**
Combine the world's best expertise with local talent.
- R&D**
Catalyze innovative processes to understand vulnerabilities to future risks and uncertainties.
- Integration**
Co-ordinate closely with local communities and governments in an agile working environment.
- Process**
Ensure Government and community stakeholders work closely with experts from day one.
- Finance**
Source innovative project funding through public private partnerships, blended and private finance initiatives.



Confidence is very high that the window of opportunity – the period when significant change can be made, for limiting climate change within tolerable boundaries – is rapidly narrowing.”

IPCC report August 2019

Water as Leverage is an initiative of the Government of the Netherlands

Water as Leverage ©2019 www.waterasleverage.org

Cases WAL Wadden

The Wadden Sea World Heritage Site

World Heritage Area



1. Texel
- Zelfvoorziening water
- Natuur, vernatting duinen
- Nature Based Solutions
- Toekomst landbouw
- Coöperatie grondwater
Partners: gemeente, SBB, LTO

3. Terschelling
- Waterveiligheid
- Zoetwater
- Landbouw & voedsel
Partners: gemeente, provincie, Wetterskip, LTO, Vitens, Deltares/WUR/vHall

2. Harlingen, stad aan het Wad
- Woningbouw en vernieuwing
- Havenontwikkeling
- Dijkversterking
- Natuur, NBS
Partners: provincie gemeente ws

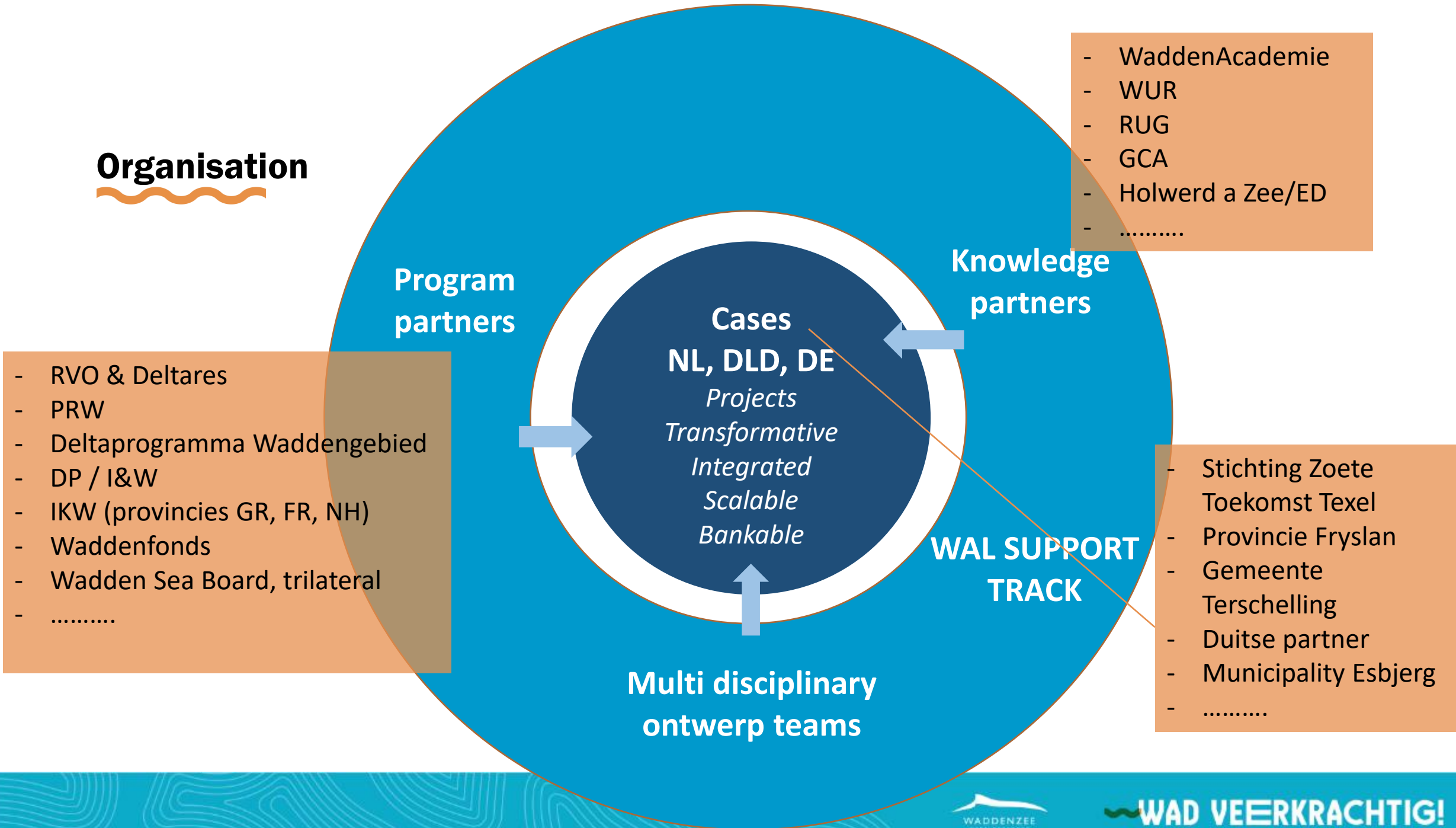
6. Ribe, city at Wadden Sea, DE
- Climate adaptation planning
- Flood protection
- Nature, river & wad
Partners: Municipality Esbjerg

5. Oost Friesland
- Climate adaptation planning
- Flood protection
Partners: 1/2 Kreisen

4. Eems Dollard
- Financieel-organisatisch
Partners: pr Eems-Dollard, prov Groningen



Organisation



Planning

- | | |
|---|-------------------------|
| 1. Preparation: | May 2021 – March 2022 |
| 2. Design challenge: | April 2022 – March 2023 |
| <i>-> Ministerial conference Wadden Sea, December 2022</i> | |
| <i>-> United Nations event on Climate Adaptation, March 2023</i> | |
| 3. Elaborate projects (technical financial, organizational): | 2023-2025 |
| 4. Execution projects; | 2026 -> |

