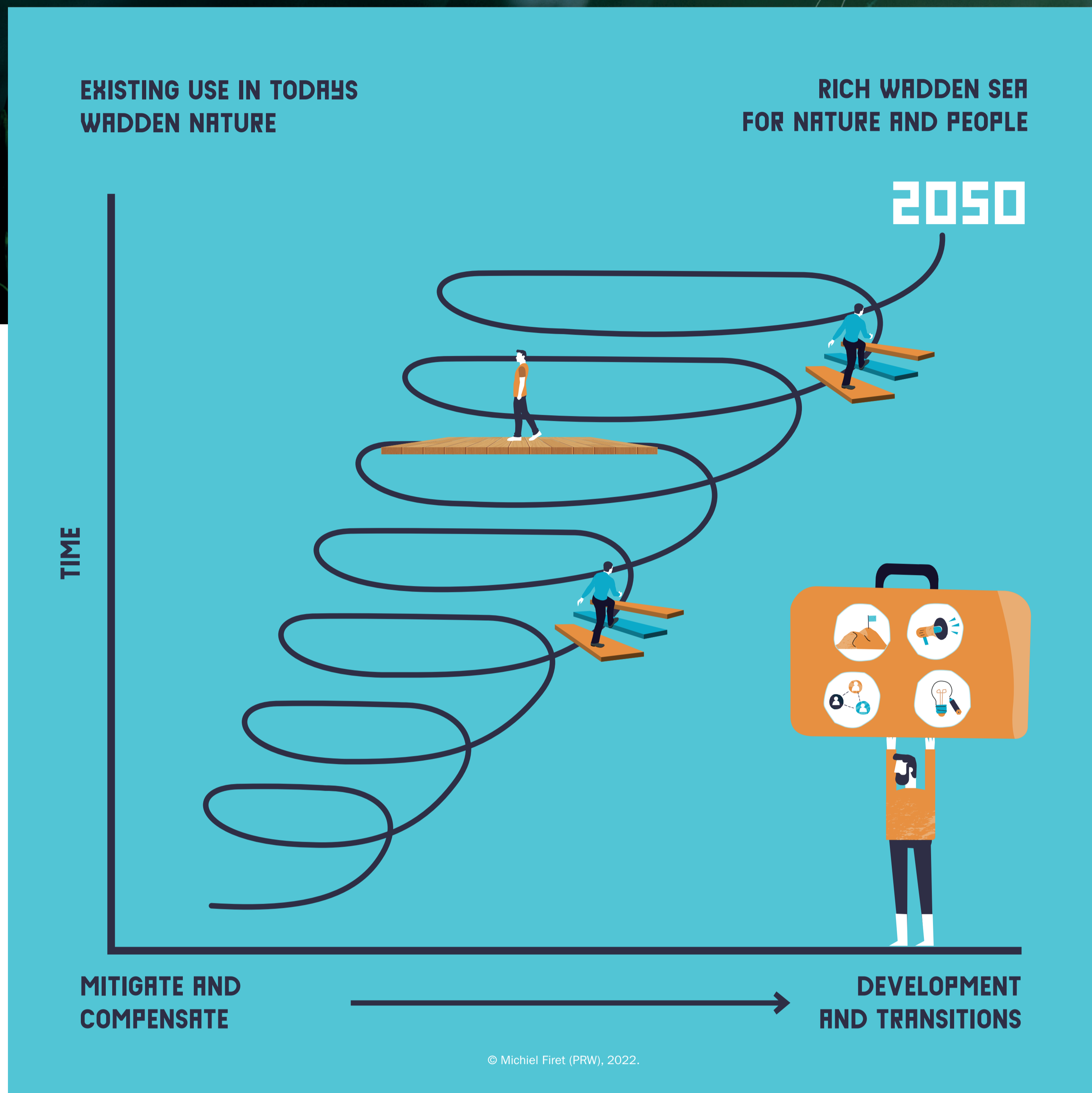


Conceptual approaches

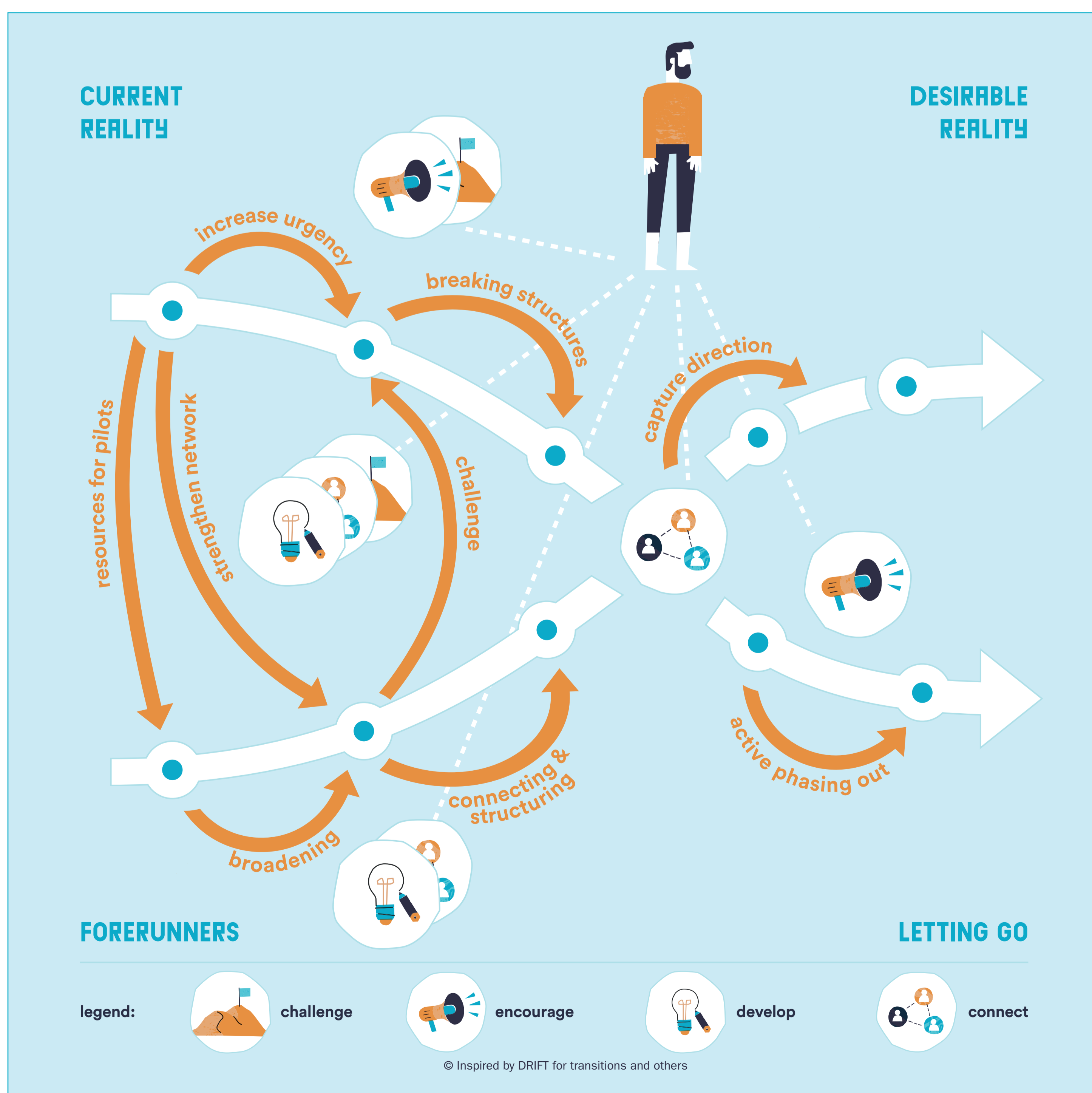
2008 – 2022 is the timespan of the Dutch Programme towards a Rich Wadden Sea (PRW). This joint initiative of Dutch governments and nature organisations helped as a network organisation to achieve the long-term goals of the 'Rich Wadden Sea for nature and people'. PRW used – as asked – different methods such as challenging and connecting people. And used dialogues and worked on the basis of facts. Major transitions are essential for the challenges facing the trilateral Wadden Sea. PRW applied different conceptual approaches for its role in these transitions. This poster presents the highlights.



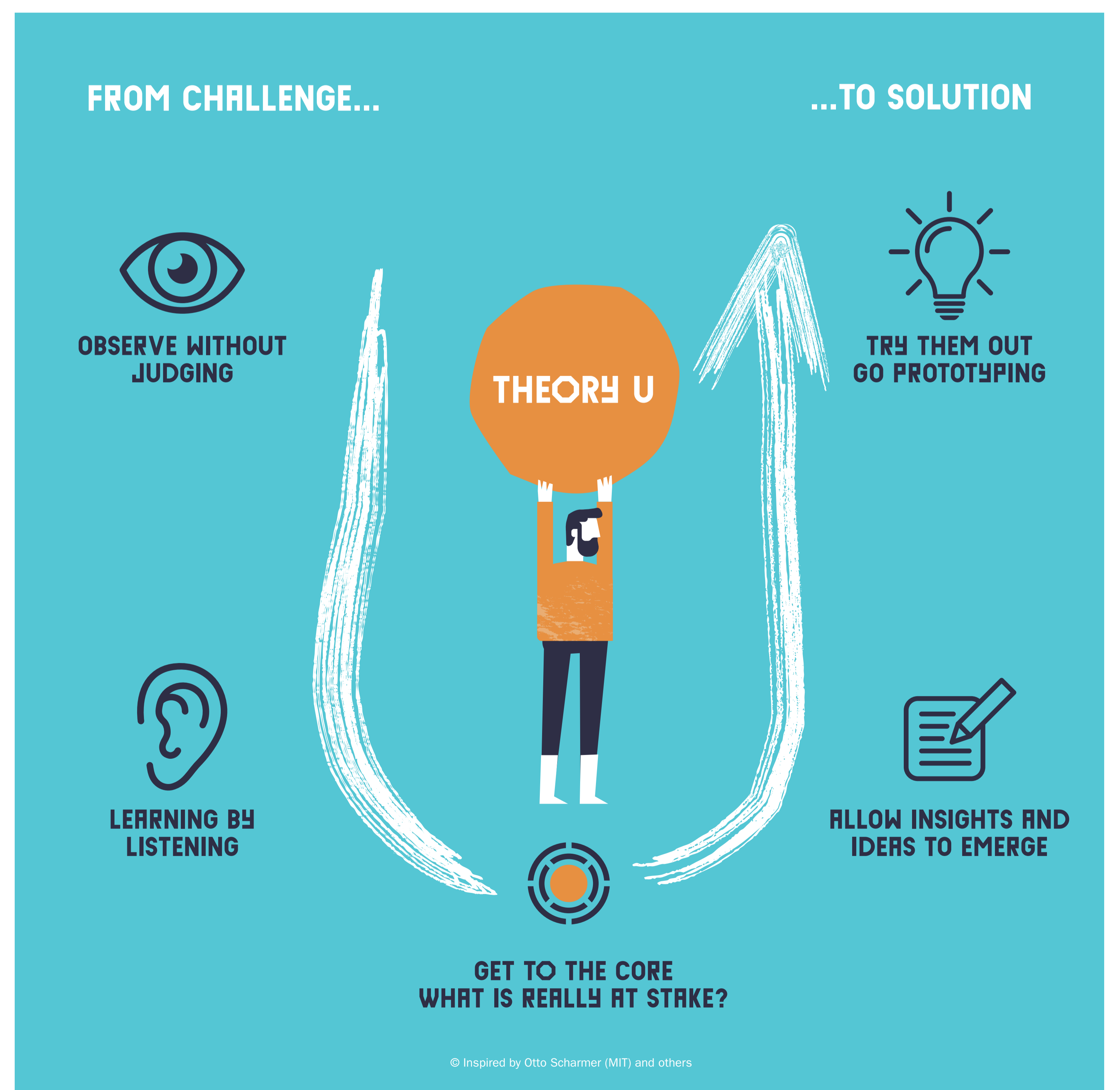
12 JAAR PRW Working towards a rich Wadden Sea for nature and people has been at the heart of Dutch Wadden Sea policy since 2006. Not only conservation, but also development of nature and transformation to sustainable use. In practice, we face a recurring process of mutual alignment on this goal, that 'new regime', and efforts to keep it as it is, the 'current regime'. PRW initiatives focused on nature development and the system change to low-impact use.



SMALL WINS THEORY Throughout the period, PRW has used the essence of the Small Wins Theory (Termeer et al.) Encouraging pilots and learning by doing. Identifying interesting (in terms of contribution to the goal) efforts and then supporting them. With capacity, connections and sometimes a little money. Bringing ideas to pilots with small practical steps finding out if a particular approach is feasible. Inviting scientists to help find (practical) answers for next steps.



TRANSITION-X In 2017, the Dutch Ministry of Infrastructure and Water Management asked DRIFT (drift.eur.nl) to research and map major system changes. One of the results, the concept of the Transition-X, is used by PRW as a conceptual model for its strategies. PRW used its four roles – challenge, encourage, connect and develop – to support transitions from the current system towards the proposed regime; a resilient Wadden nature and sustainable, low impact use.



THE CORE OF THEORY U Theory U (Scharmer et al, 2009) is the concept behind several developments in the (Dutch) Wadden Region. PRW used it, for example, in the issue of sustainable accessibility of the Wadden Islands. Instead of jumping straight to solutions, participants observed, learned, listened, got to the heart of the challenge, gained insight and ideas, and prototyped. This proved a valuable approach for many issues and dialogues.